

# Environmental Statement: Figure 7.5A Geological Landscapes

ES F 7.5A

Development of National Significance

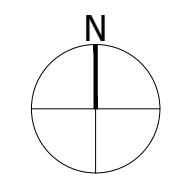
## Alaw Môn Solar Farm

Land west of the B5112, 415m south of Llyn Alaw, 500m east of Llantrisant and 1.5km west of Llannerch-y-Medd, Anglesey

February 2024

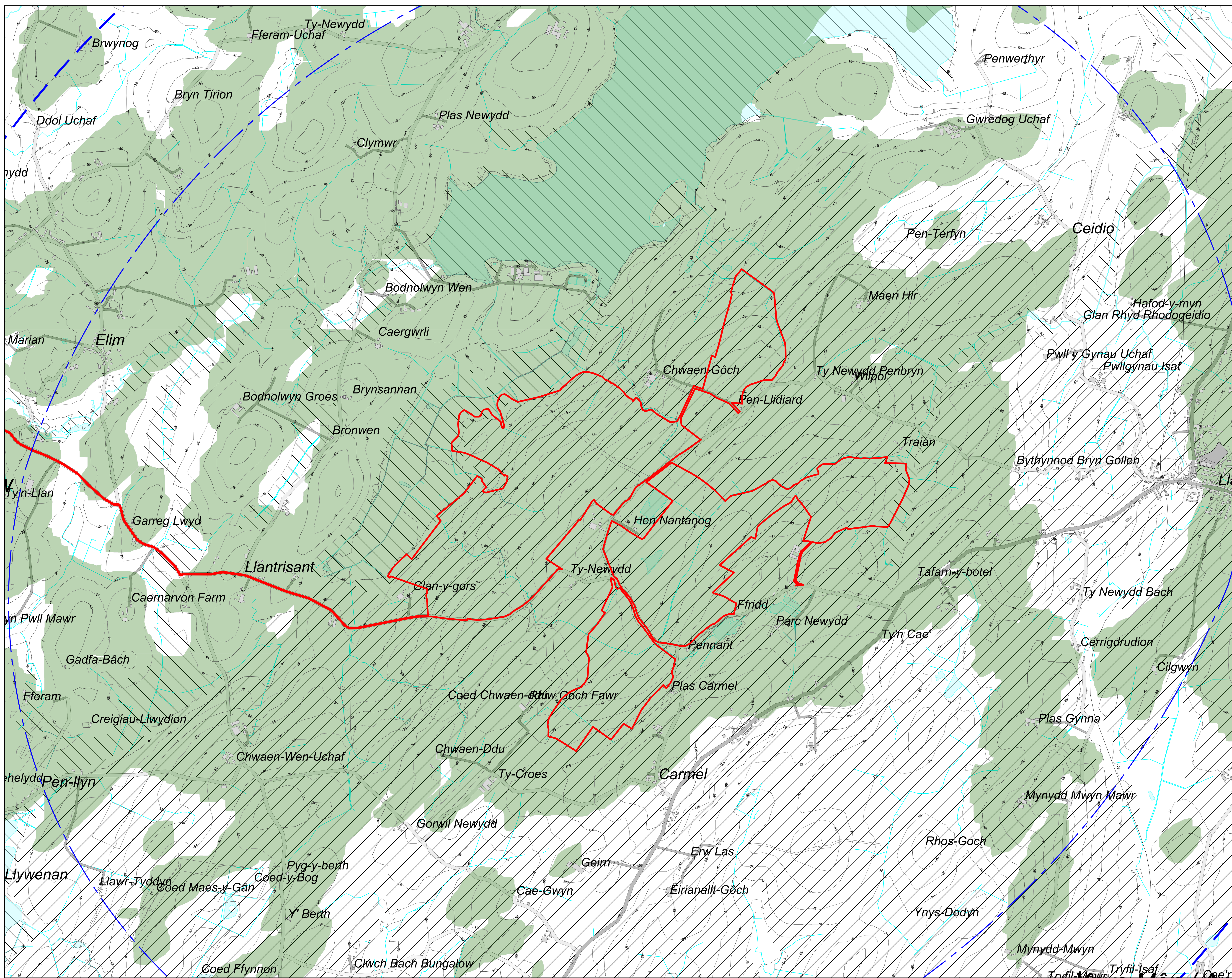






**LEGEND**

- Site Boundary
- Existing Water Courses and Water Features ^
- Contours/Spot Heights (Metres AOD) ^
- Study Area - 2km
- Search Area - 3km
- ZTV - Visibility
- Areas with intervisibility with the Site
- Landmap - Geological Landscapes
- YNSMNGLO18 - Afon Alaw
- YNSMNGLO20 - Llanerchymedd



**FIGURE 7.5a**

Project:  
**Alaw Môn Solar Farm,**  
 Anglesey

Drawing Title:  
**Landmap: Geological Landscapes**

Date	Scale	Drawn by	Check by
21.02.2024	1:10,000 @A1 1:20,000 @A3	ML	AC
Project No	Drawing No	Revision	
333100282	LN-LP-21	-	



Stantec UK Limited  
 7 Soho Square  
 London  
 W1D 3QH  
 T: 020 7446 6888