

Environmental Statement: Figure 7.3 Topographical Feature Plans

ES F 7.3

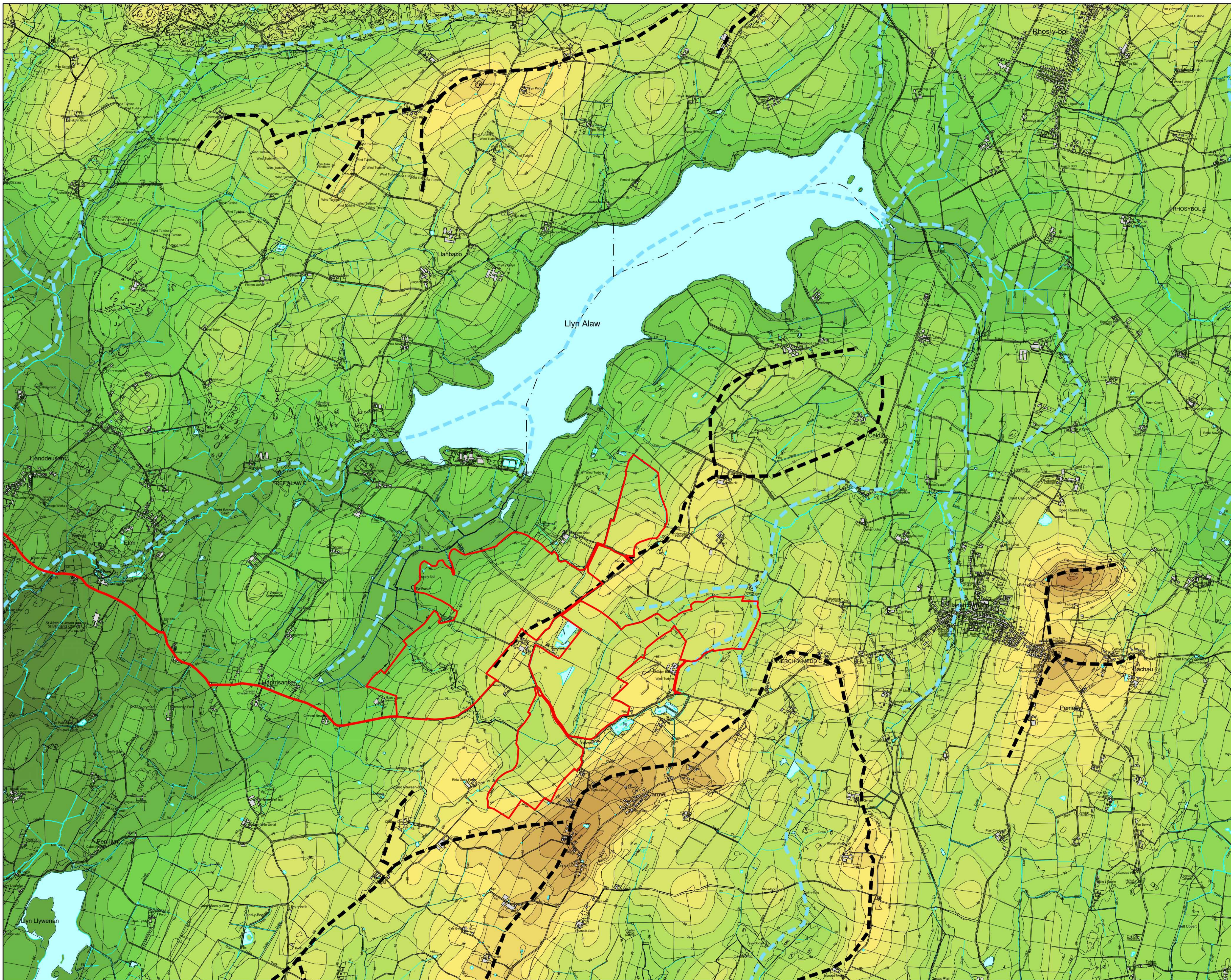
Development of National Significance

Alaw Môn Solar Farm

Land west of the B5112, 415m south of Llyn Alaw, 500m east of Llantrisant and 1.5km west of Llannerch-y-Medd, Anglesey



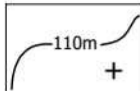


February 2024

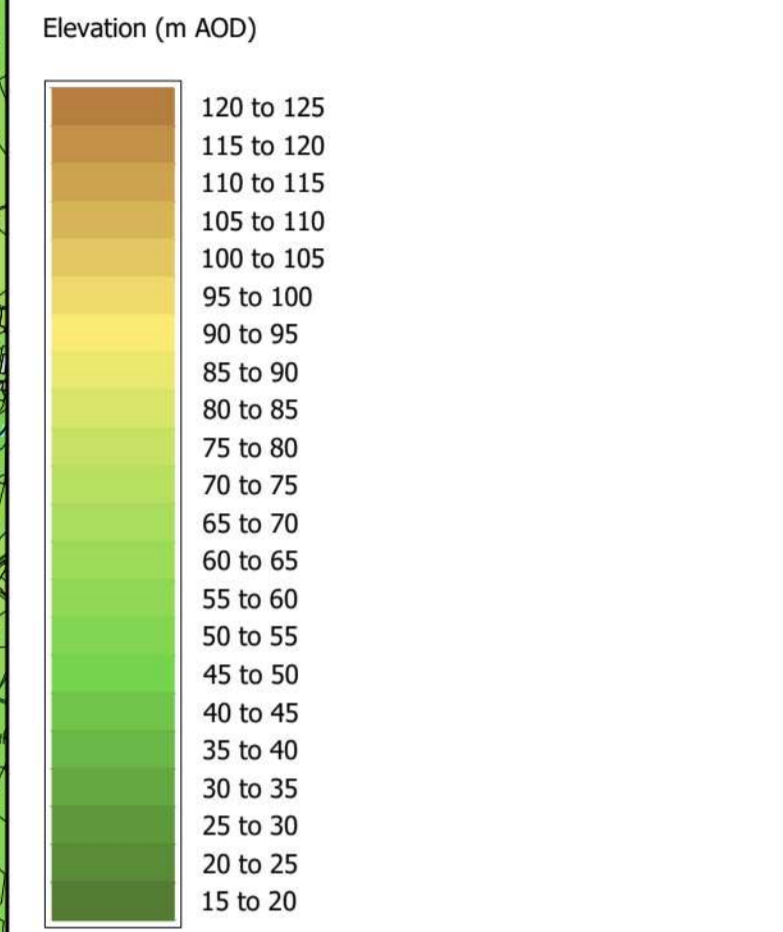




The scaling of this drawing cannot be assured
 Revision _____ Date _____ Dm _____ Ckd _____

LEGEND

-  Site Boundary
-  Existing Water Courses and Water Features ^
-  Contours/Spot Heights (Metres AOD) ^
-  Ridgelines
-  Valleys



Sources: ^ OS Mapping
 Data collated for constraints and analysis mapping is based on publicly available sources at the time of preparation inserted using the British National Grid and may itself not be accurate. Stantec shall not be liable for the accuracy of data derived from external sources.

FIGURE 7.3

Project: Alaw Môn Solar Farm, Anglesey
 Drawing Title: Topographical Features Plan

Date	Scale	Drawn by	Check by
25.10.2023	1:15,000 @A1 1:30,000 @A3	ML	FS
Project No	Drawing No	Revision	
333100282	LN-LP-02	-	



Stantec
 Stantec UK Limited
 10th Floor
 Bank House
 8 Cherry Street
 Birmingham
 B2 5AL
 T: 0121 633 2900
 stantec.com/uk