

Environmental Statement: Figure 7.12 Visual Appraisal Plan

ES F 7.12

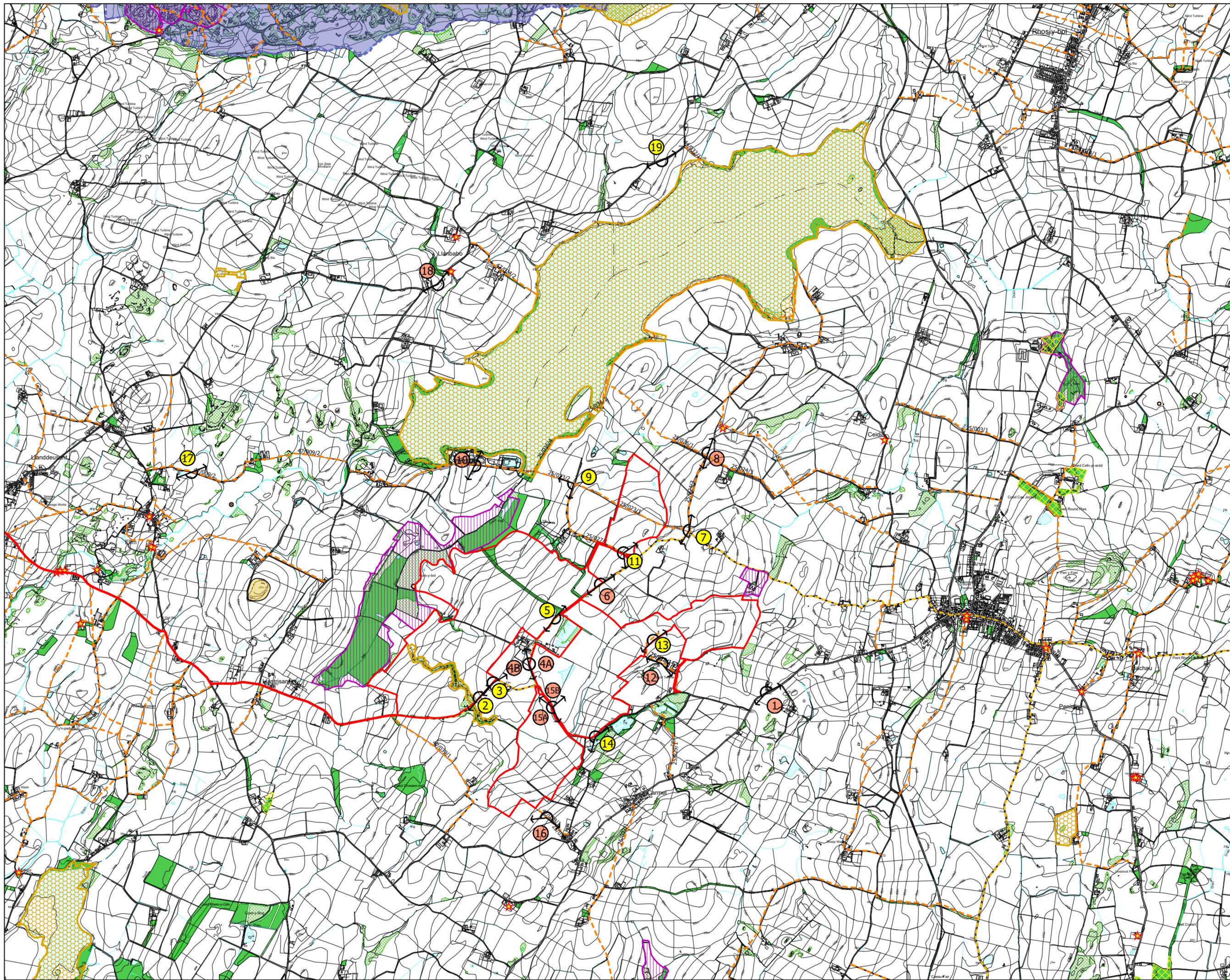
Development of National Significance

Alaw Môn Solar Farm

Land west of the B5112, 415m south of Llyn Alaw, 500m east of Llantrisant and 1.5km west of Llannerch-y-Medd, Anglesey

February 2024





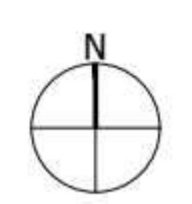
LEGEND

-  Site Boundary
-  Ancient Woodland #
-  Existing Woodlands, Copses and Tree Belts ^
-  Existing Scrub ^
-  Existing Water Courses and Water Features ^
-  Contours/Spot Heights (Metres AOD) ^
-  Public Rights of Way *
-  Sustans Cycle Route +
-  Listed Buildings ~
-  Scheduled Monument ~
-  Sites of Special Scientific Interest #
-  Special Landscape Area ^^ Mynydd Mechl
-  Local Wildlife Sites
-  Location of Photographic Viewpoints (Site Context Photographs: 1-19)
-  Location of Photomontages (Site Context Photographs: 1; 4a & 4b; 6; 8; 10; 12; 15a & 15b; 16; 18 & 19)


Sources:
 * GIS Mapping
 * Natural Resources Wales GIS Data Set
 * Cadw GIS Database
 * Isle of Anglesey County Council GIS Data
 * Sustans National Cycle Network GIS Data
 * Review of Special Landscape Areas in Gwynedd and Anglesey, December 2012
 Data collected for constraints and analysis mapping is based on publicly available sources at the time of preparation (inserted using the British National Grid and may itself not be accurate. Stantec shall not be liable for the accuracy of data derived from external sources.

FIGURE 7.12

Project
**Alaw Môn Solar Farm,
 Anglesey**
 Drawing Title
Visual Appraisal Plan



Date 25.10.2023	Scale 1:15,000 @A1 1:30,000 @A3	Drawn by ML	Check by FS
Project No 333100282	Drawing No LN-LP-12	Revision A	



Stantec
 Stantec UK Limited
 10th Floor
 Bank House
 8 Cherry Street
 Birmingham
 B2 5AL
 T: 0121 633 2900
 stantec.com/uk