

Environmental Statement: Figure 11.1 Designated Ecological Sites Within 200m of Road used by Construction Vehicles

ES F 11.1

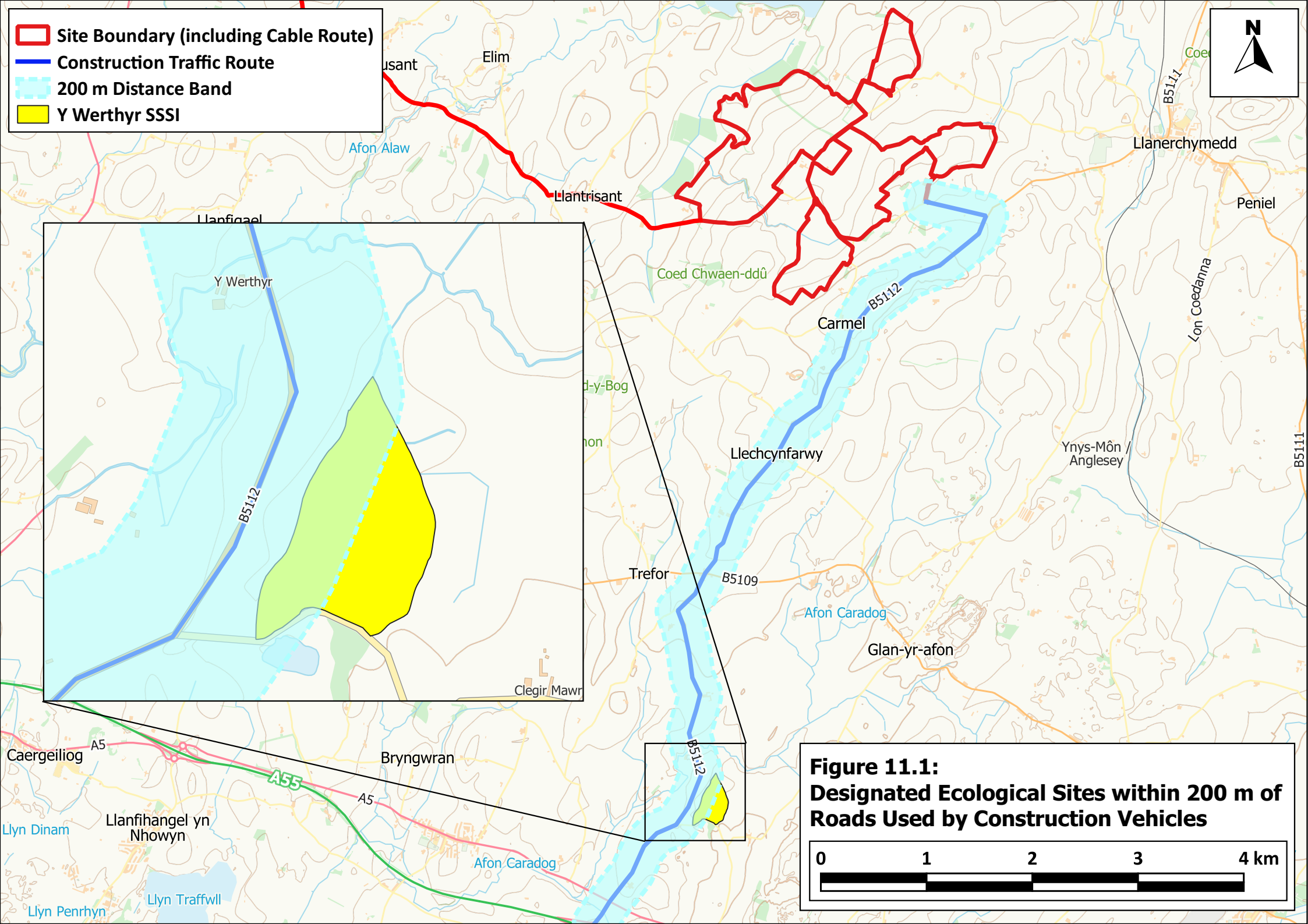
Development of National Significance

Alaw Môn Solar Farm

Land west of the B5112, 415m south of Llyn Alaw, 500m east of Llantrisant and 1.5km west of Llannerch-y-Medd, Anglesey

February 2024





Site Boundary (including Cable Route)
 Construction Traffic Route
 200 m Distance Band
 Y Werthyr SSSI

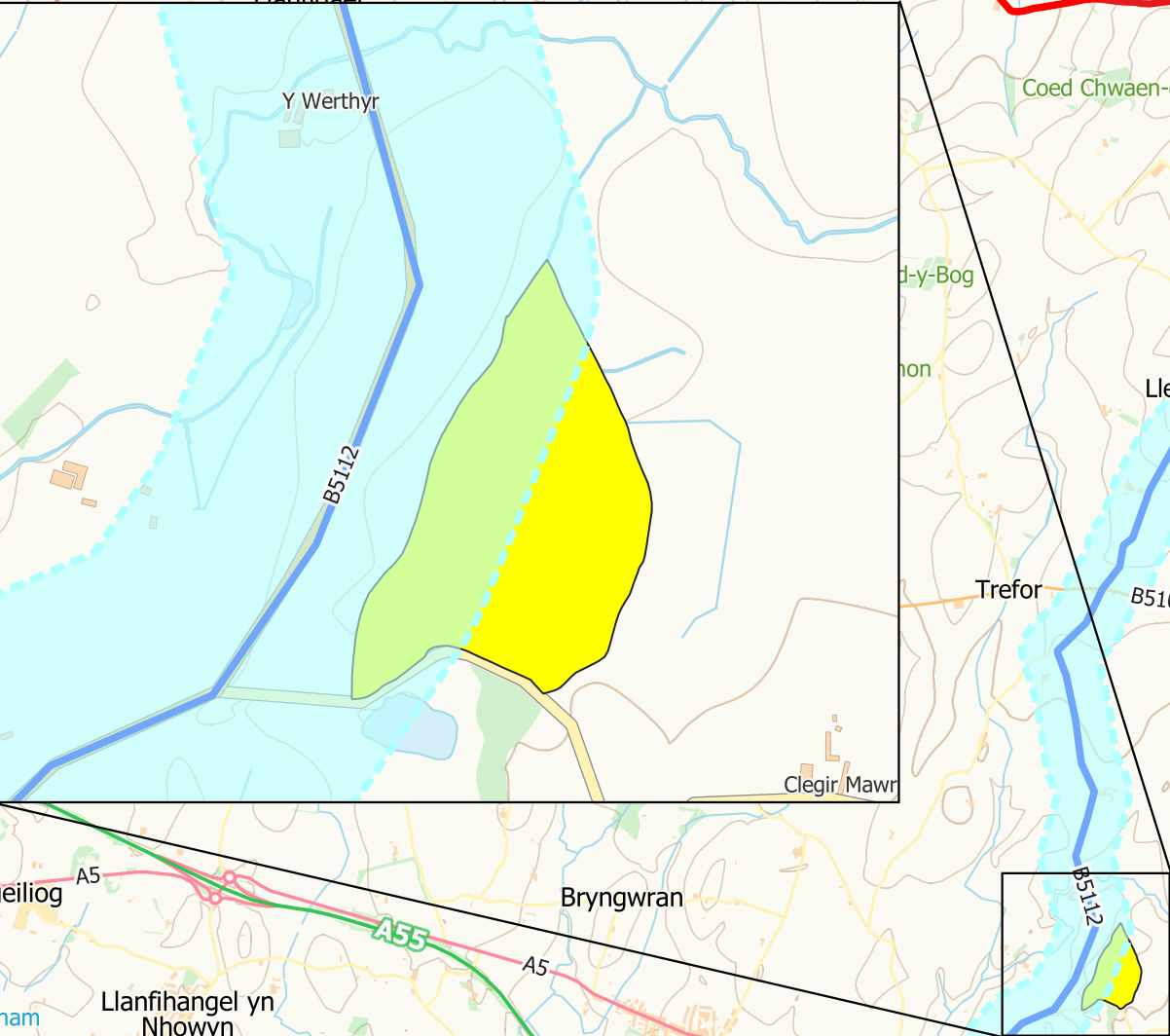


Figure 11.1:
Designated Ecological Sites within 200 m of
Roads Used by Construction Vehicles

0 1 2 3 4 km