

# Environmental Statement: Figure 7.8 Landscape Character Evaluation

ES F 7.8

Development of National Significance

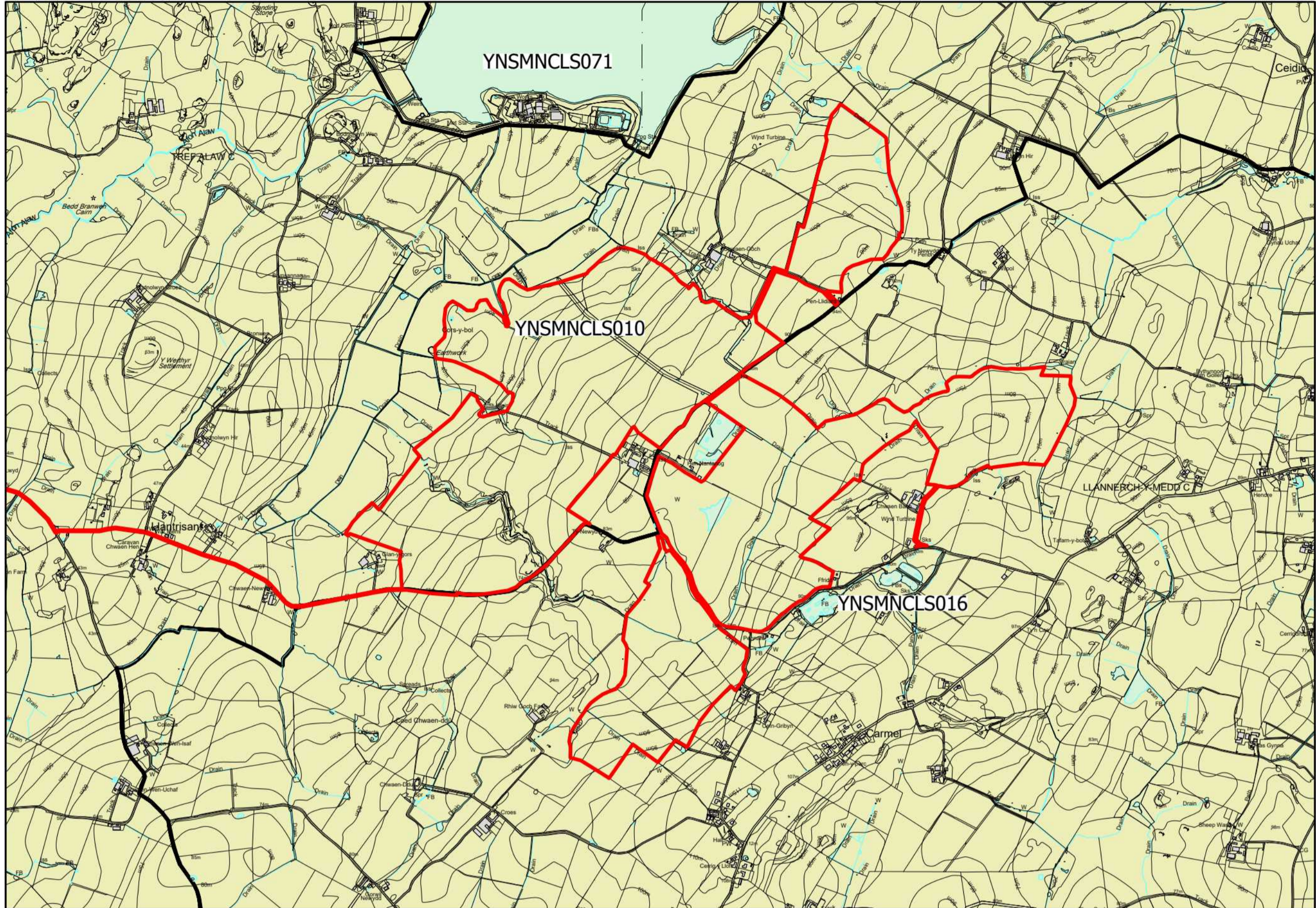
## Alaw Môn Solar Farm

Land west of the B5112, 415m south of Llyn Alaw, 500m east of Llantrisant and 1.5km west of Llannerch-y-Medd, Anglesey

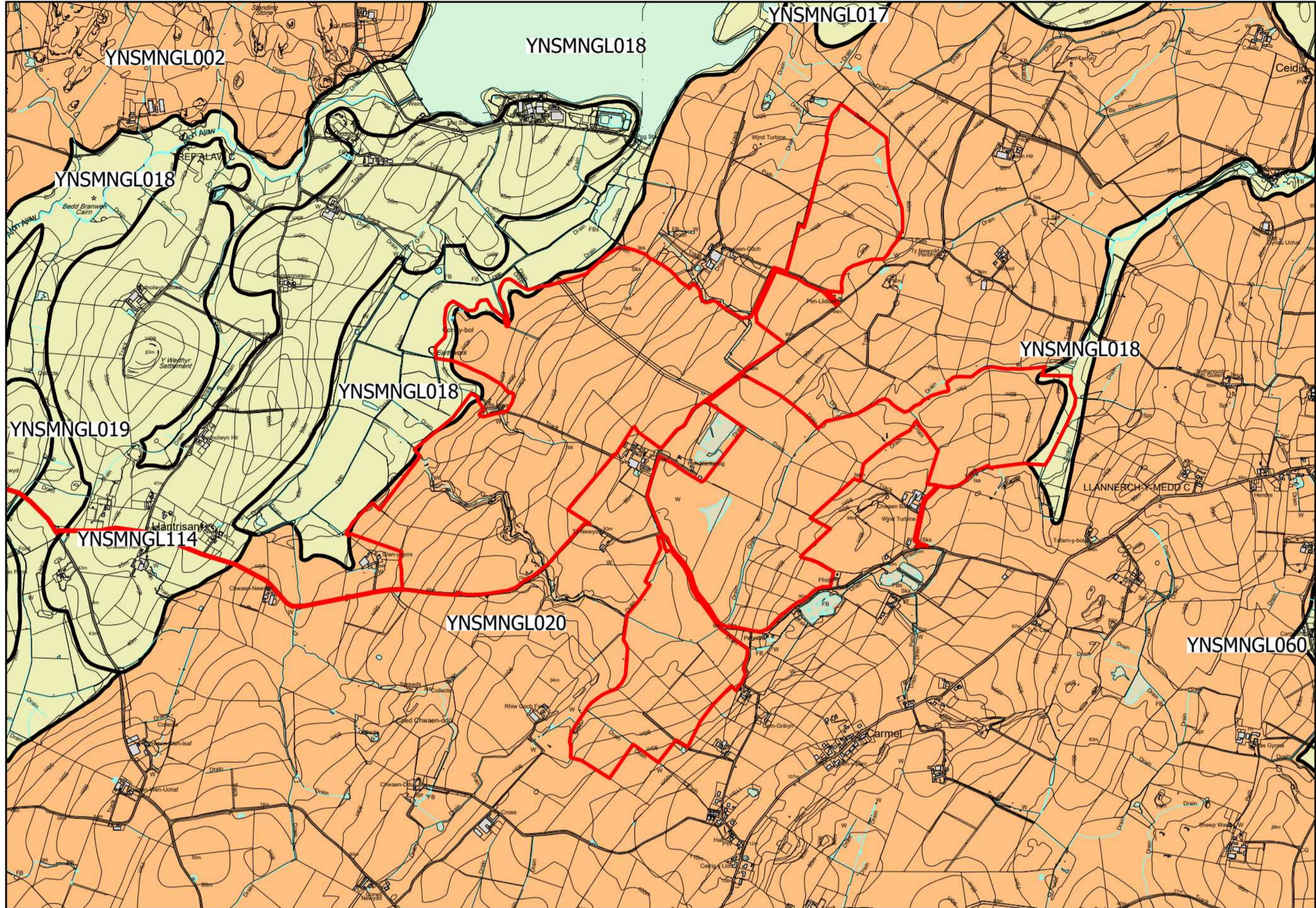
February 2024



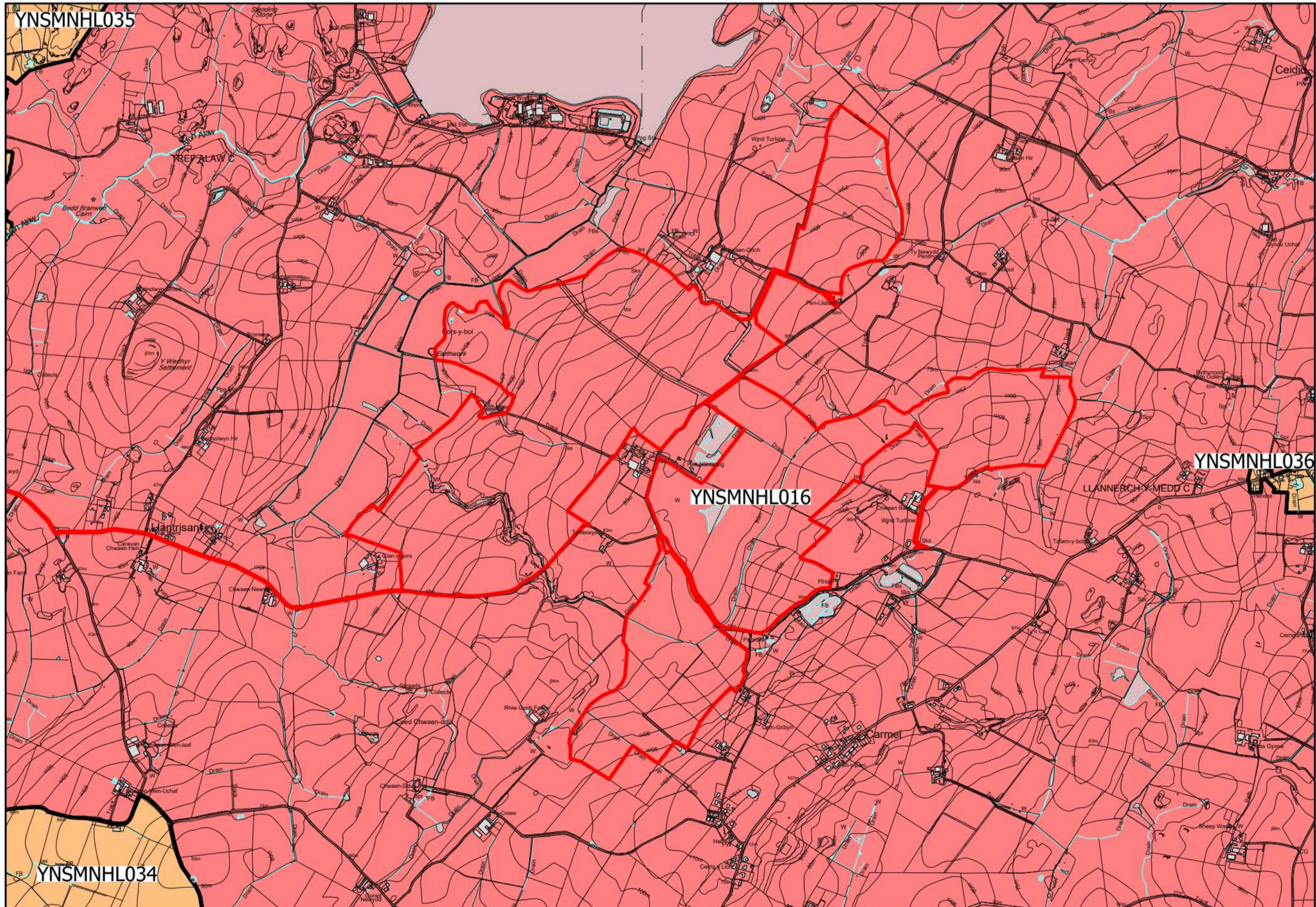
Cultural Landscape



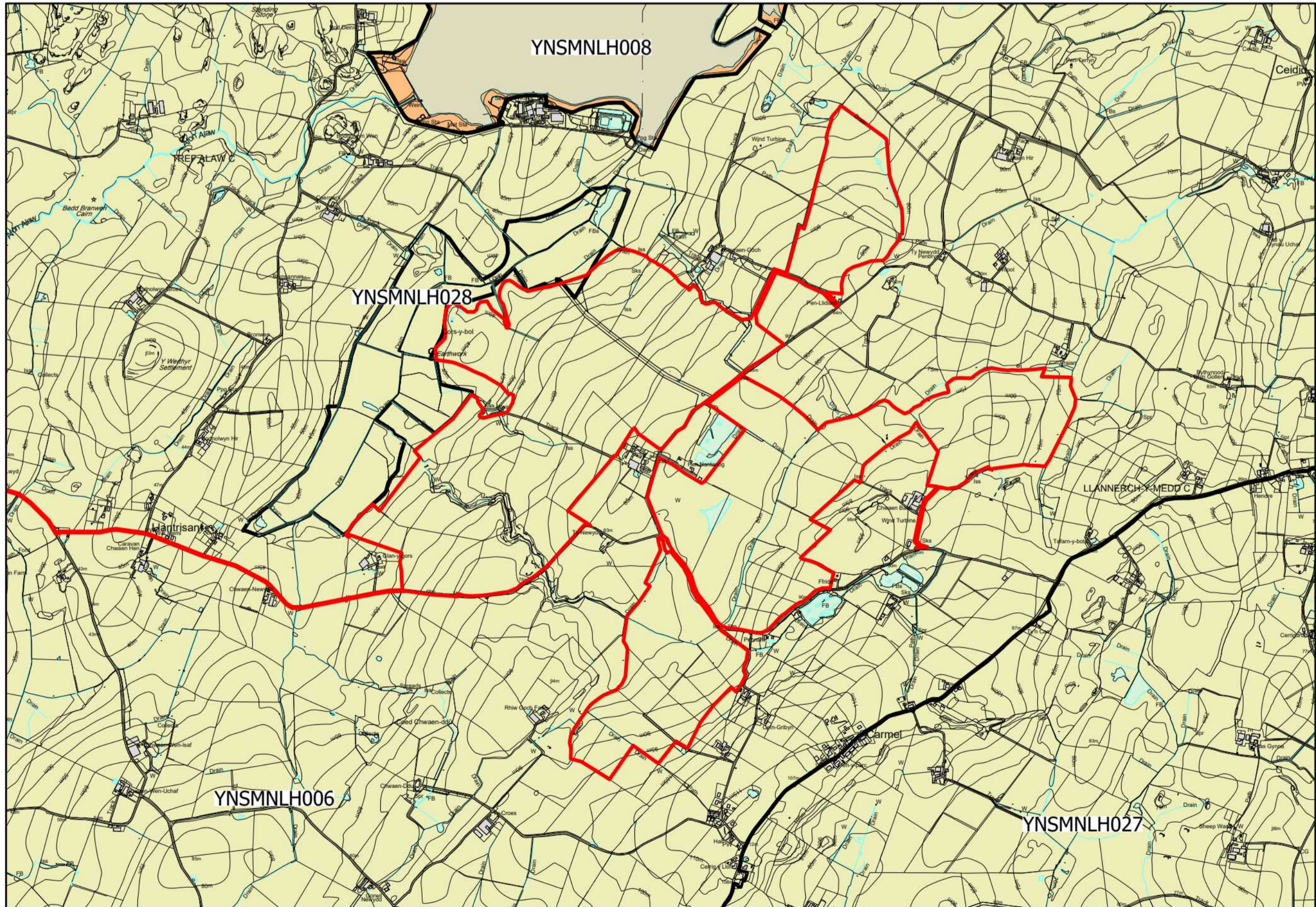
Geological Landscape



Historic Landscape



Landscape Habitats



LEGEND

- Site Boundary
- Existing Water Courses and Water Features ^
- Contours/Spot Heights (Metres AOD) ^
- Landmap Evaluation:**
- Outstanding
- High
- Moderate
- Low

Sources:  
 ^ OS Mapping

Data collated for constraints and analysis mapping is based on publicly available sources at the time of preparation inserted using the British National Grid and may itself not be accurate. Stantec shall not be liable for the accuracy of data derived from external sources.

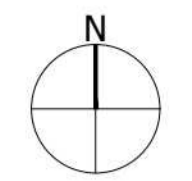


FIGURE 7.8

Project:  
**Alaw Môn Solar Farm,  
 Anglesey**  
 Drawing Title:  
**Landscape Character Evaluation**

Date	Scale	Drawn by	Check by
22.02.2024	NTS	ML	FS
Project No	Drawing No	Revision	
333100282	LN-LP-07	-	

**Stantec**  
 Stantec UK Limited  
 7 Soho Square  
 London  
 W1D 3QB  
 T: 020 7446 6888  
 stantec.com/uk